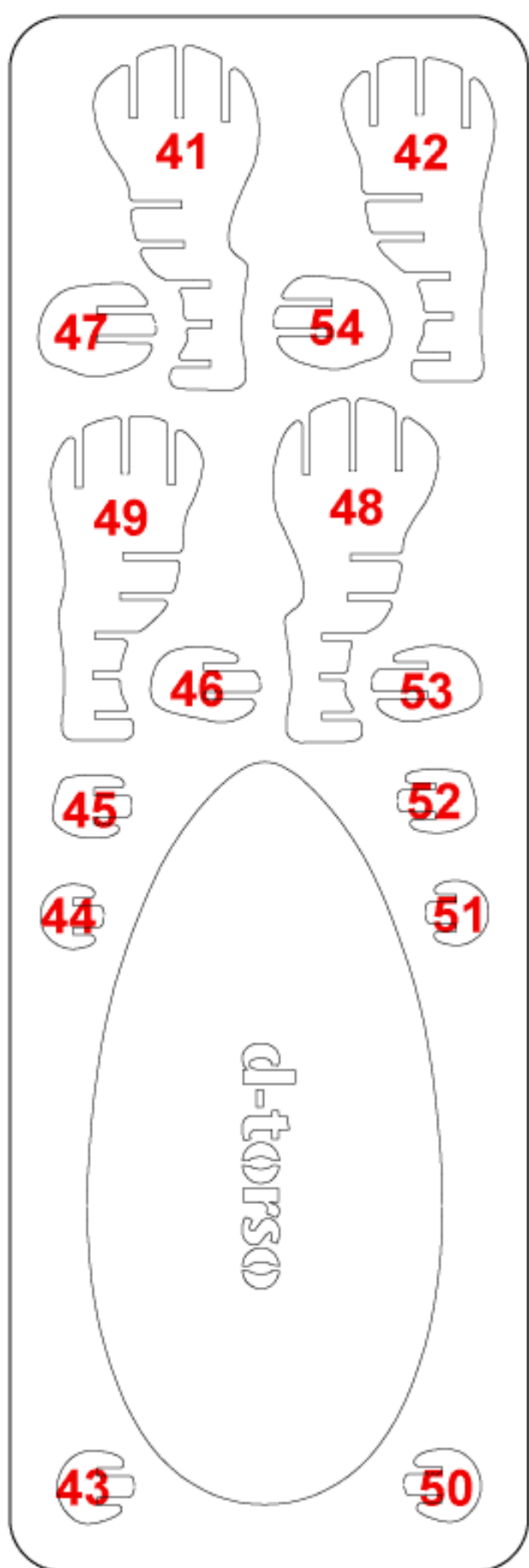
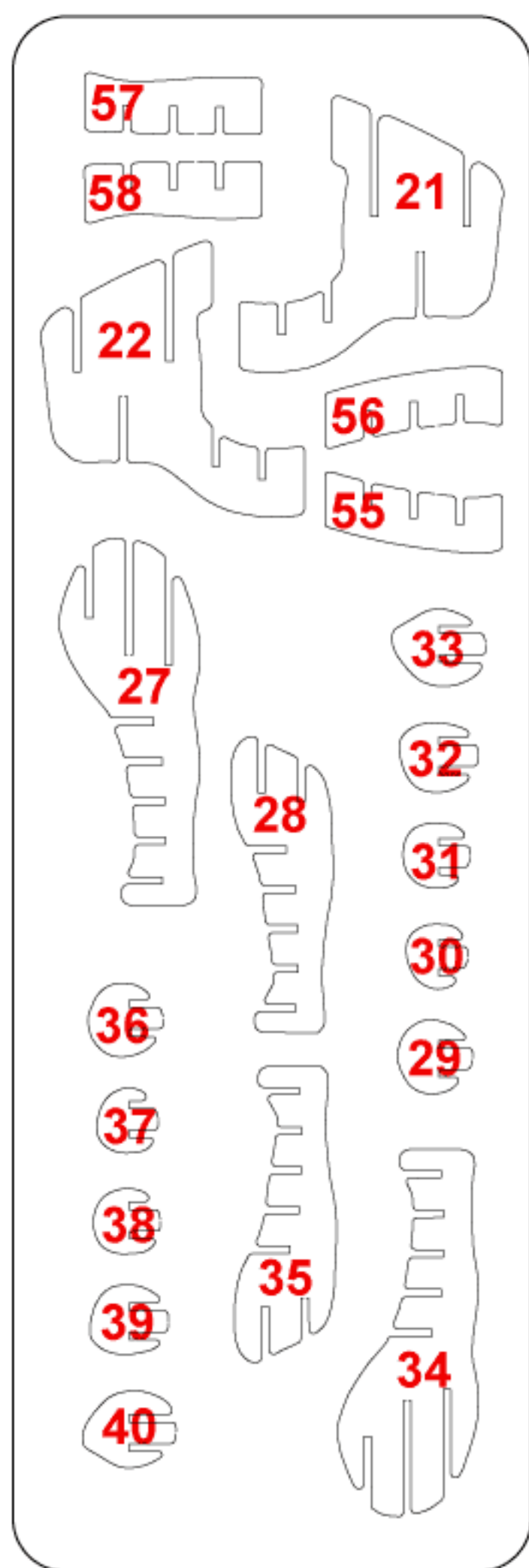
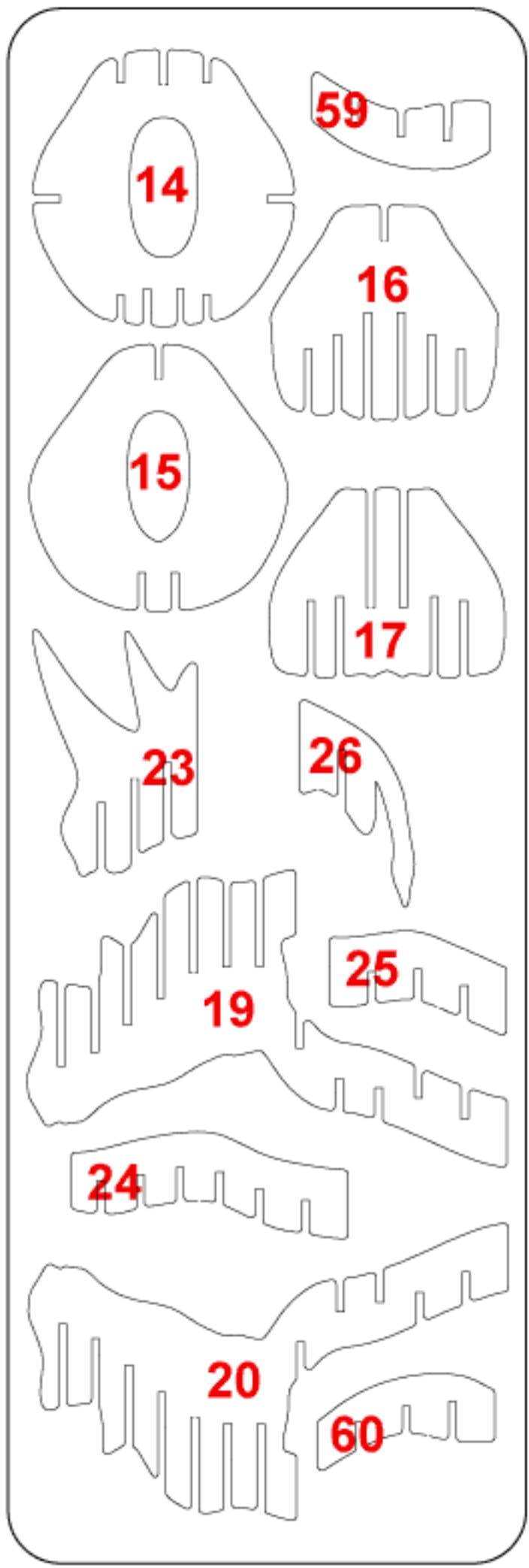
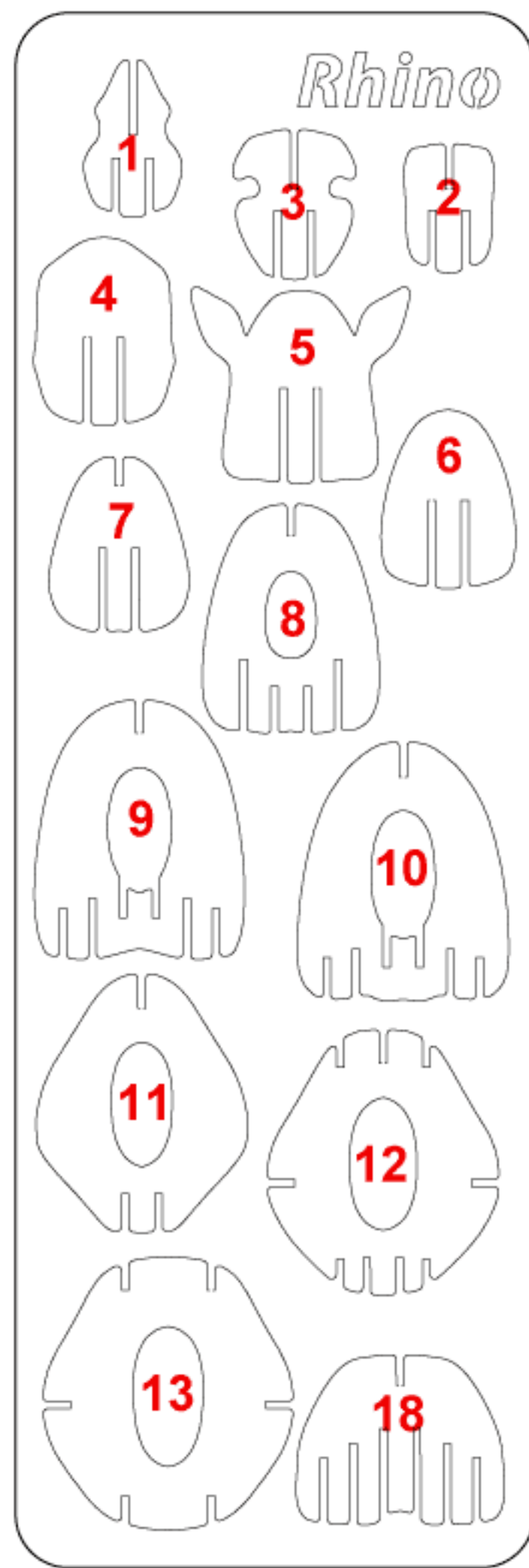
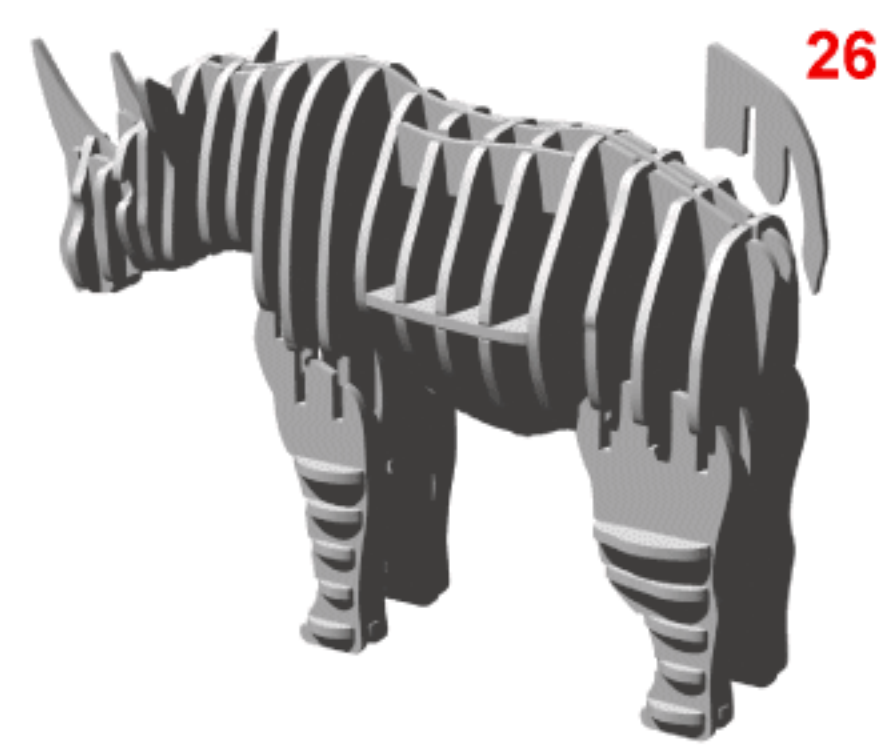
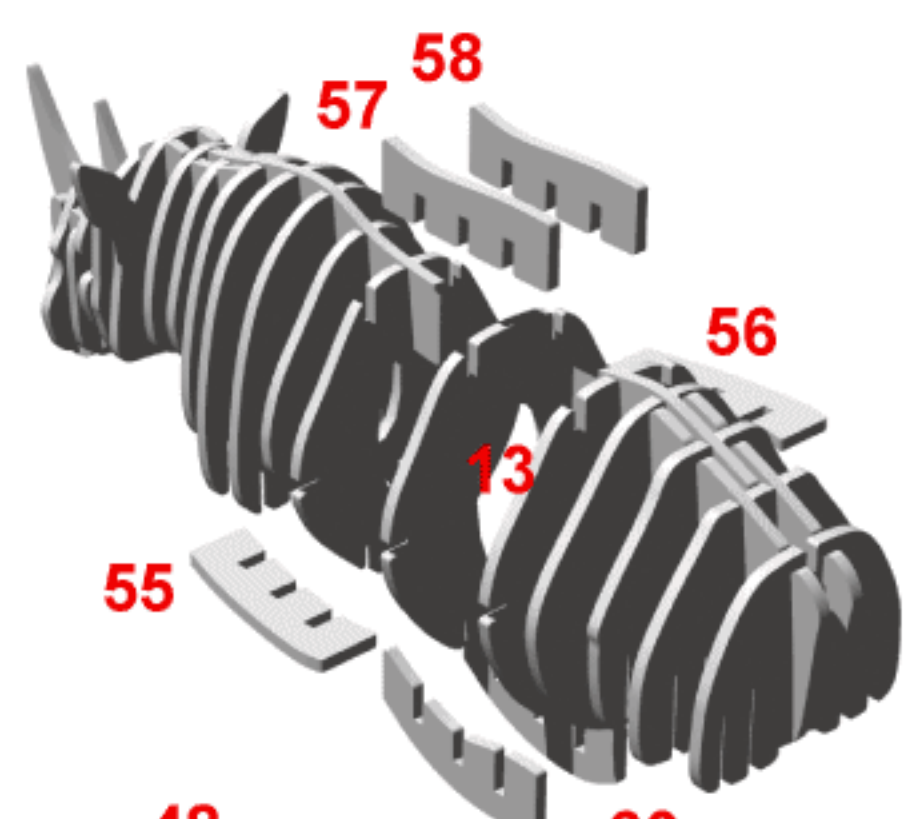
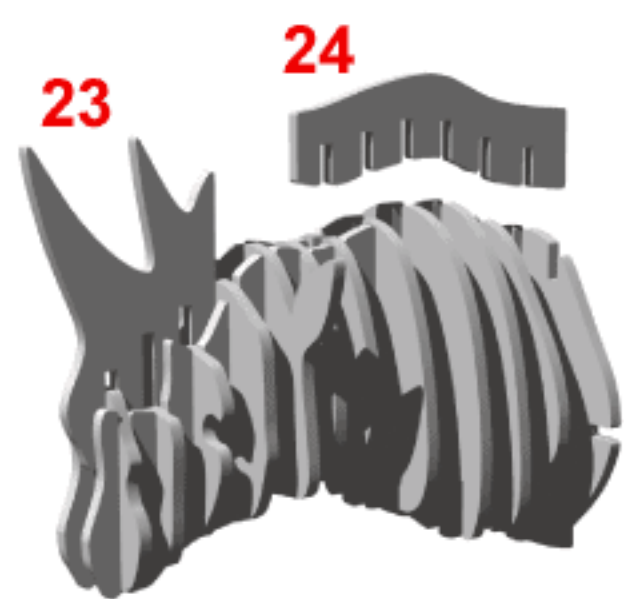
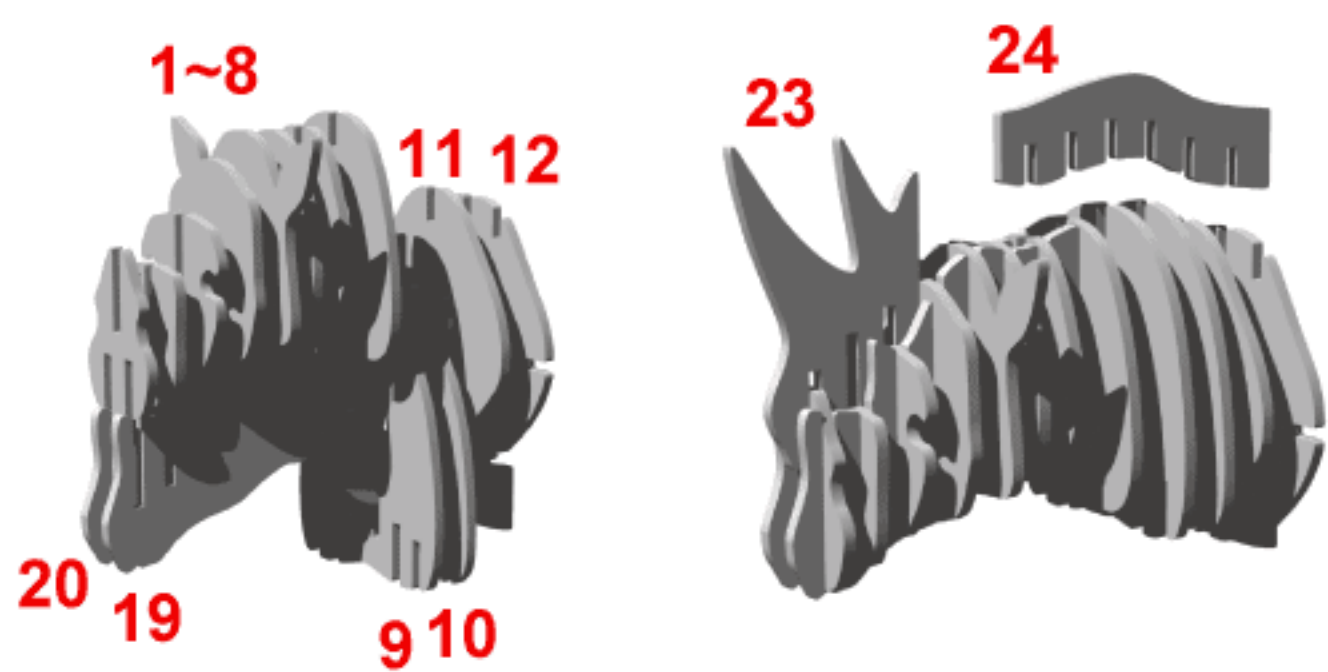


# Rhino KIT



## Care in assembling:

All parts are cut by laser and therefore carbonization powder is on the cut edges of the corrugated cardboard material. Please use a wet cloth to wipe the carbonization powder off each part when assembling. Thank you.

本製品は細密レーザー加工により部品を切断しているため、段ボール素材の切断面に炭化粉が付着しています。組立ての際には、濡れた布等を用意して、各部品の断面を拭きながら組立てを行ってください。