



name of file: St_001

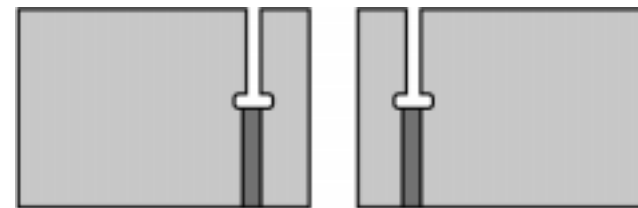
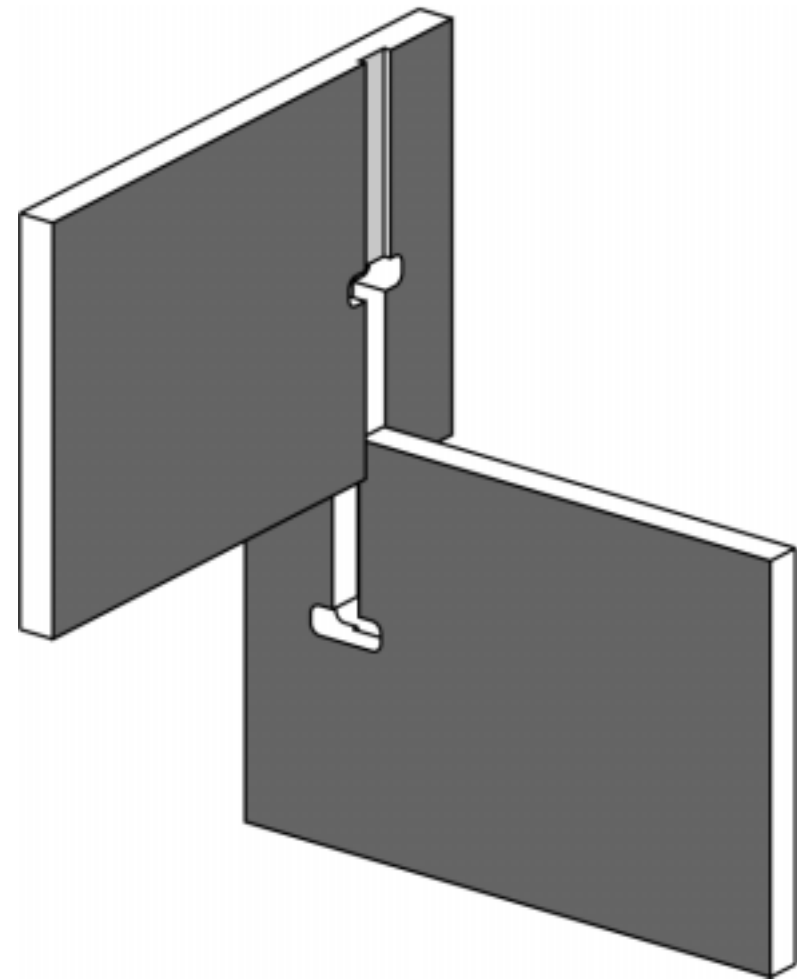
Simple Slotting Joint

The here presented slotting joints were created when it became necessary to develop detachable joints for demountable furniture manufactured from modern wood-derived materials, like multi-plex plywood for example.

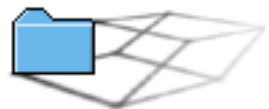
For the Simple Slotting Joint, a slot is cut up to the middle of the board, at the end of the two construction elements that are to be joined. In order to achieve a high durability of the joint despite frequent variations of the thickness of the board, the slot is executed 2 mm less than the thickness of the board and a 2 mm groove is cut as a prolongation of the slot. An exact slotting together of the joint is thus made possible.

Example of application

→ Simplizissimus-Table



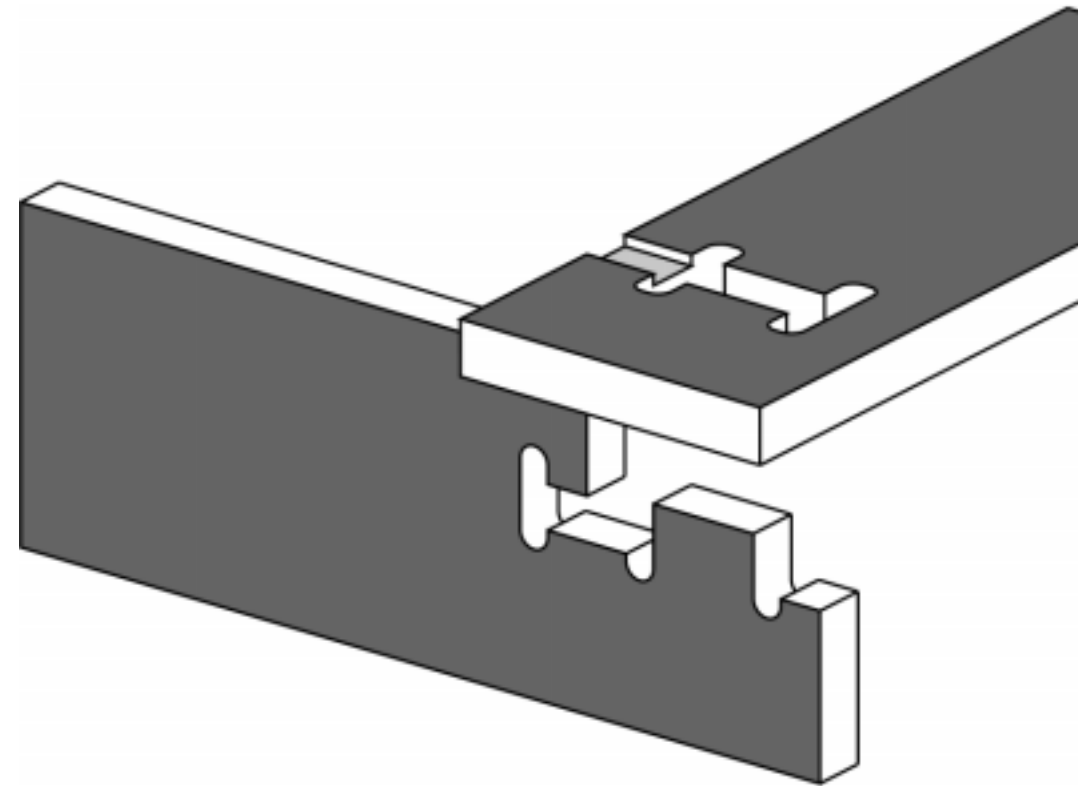
→ to the data files





Slotting Girder Joint

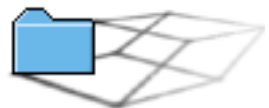
For the Slotting Girder Joint, the horizontal construction element, e.g. a shelf, is placed onto the tenon of the girder and pushed back in the slot that has been provided. Thus the board can not tip over and a durable joint is created that can be detached again at any time. Should the shelf be flush with the back of the girder, the self will be provided with an additional slot at its back edge. The Slotting Girder Joint is used for example for shelves. An advantage of the joint is a quick assembly and dismantling of the shelf without tools and small connectors.



Example of application

→ Meander-Shelf

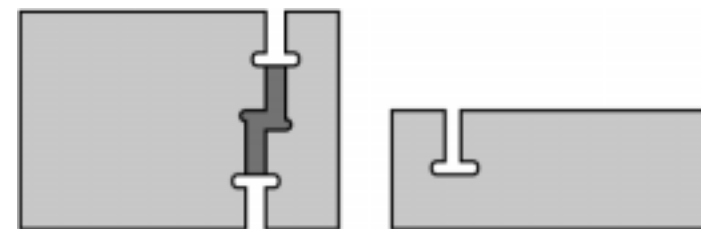
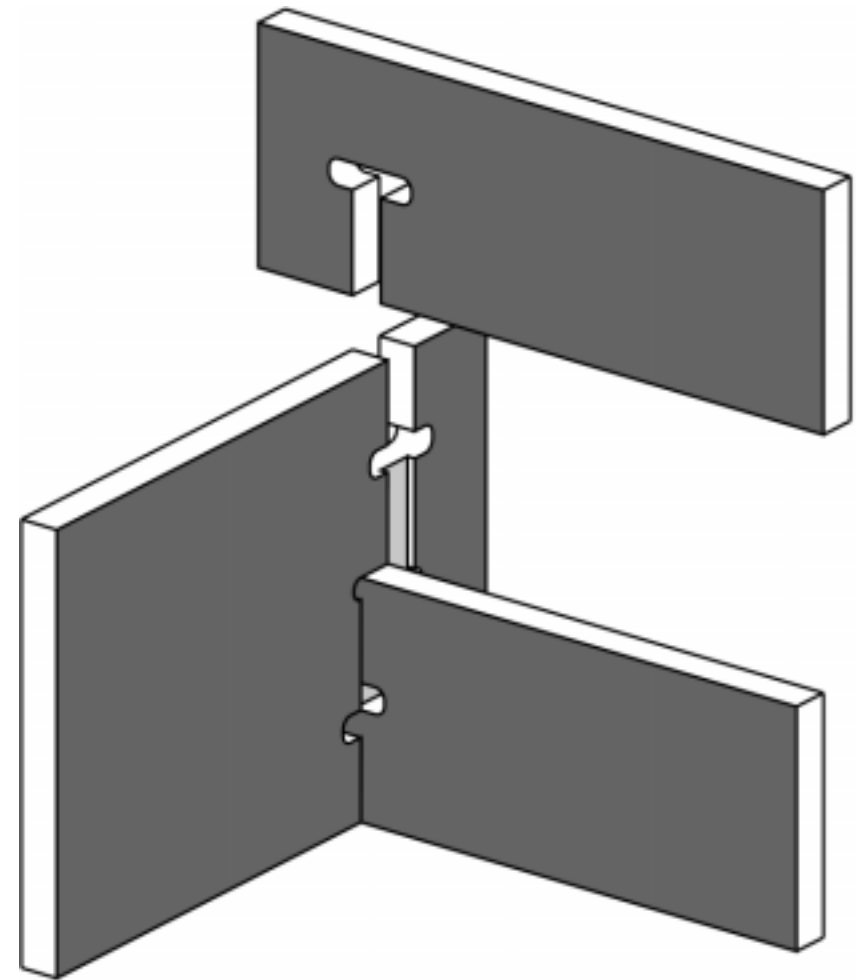
→ to the data files



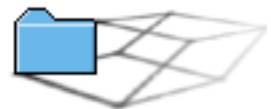


Double Lapped Slotting Joint

As opposed to the Simple Slotting Joint, the Double Lapped Slotting Joint is particularly suited for wider construction elements. A slot is cut in the wide construction element from above and from below and the narrow parts are inserted into it. Depending on the lay-out of the two slots, aligned or offset, the narrow parts either butt-joint in the middle or overlap each other. When they overlap each other, like in the case presented here, the thus created shoulder can be used as a rest base for further parts.



→ to the data files



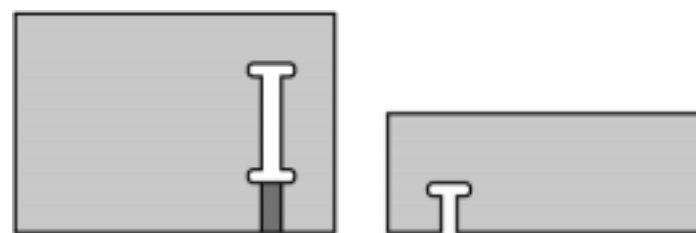
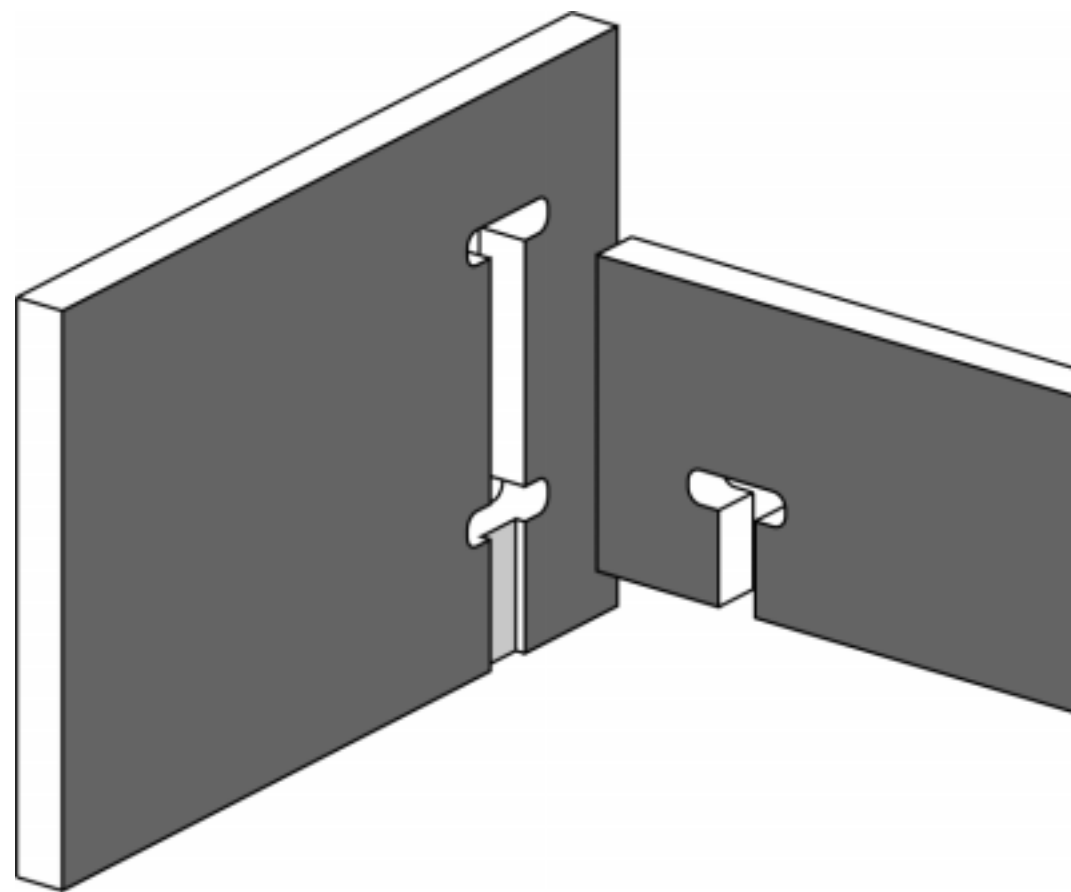


name of file: St_004

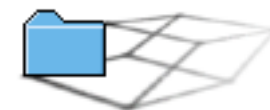
Hooked Slotting Joint

For the Hooked Slotting Joint, the cross bar is pushed through a slot in the girding side or headboard and thus hooked. It is secured through its own weight, and can be detached at any time. The groove cut in prolongation of the slot not only permits to even out variations in the thickness of the material, but also guides the cross bar along its width and thus secures it against torsion.

The Hooked Slotting Joint is suitable for bed construction or for cross bars of tables.



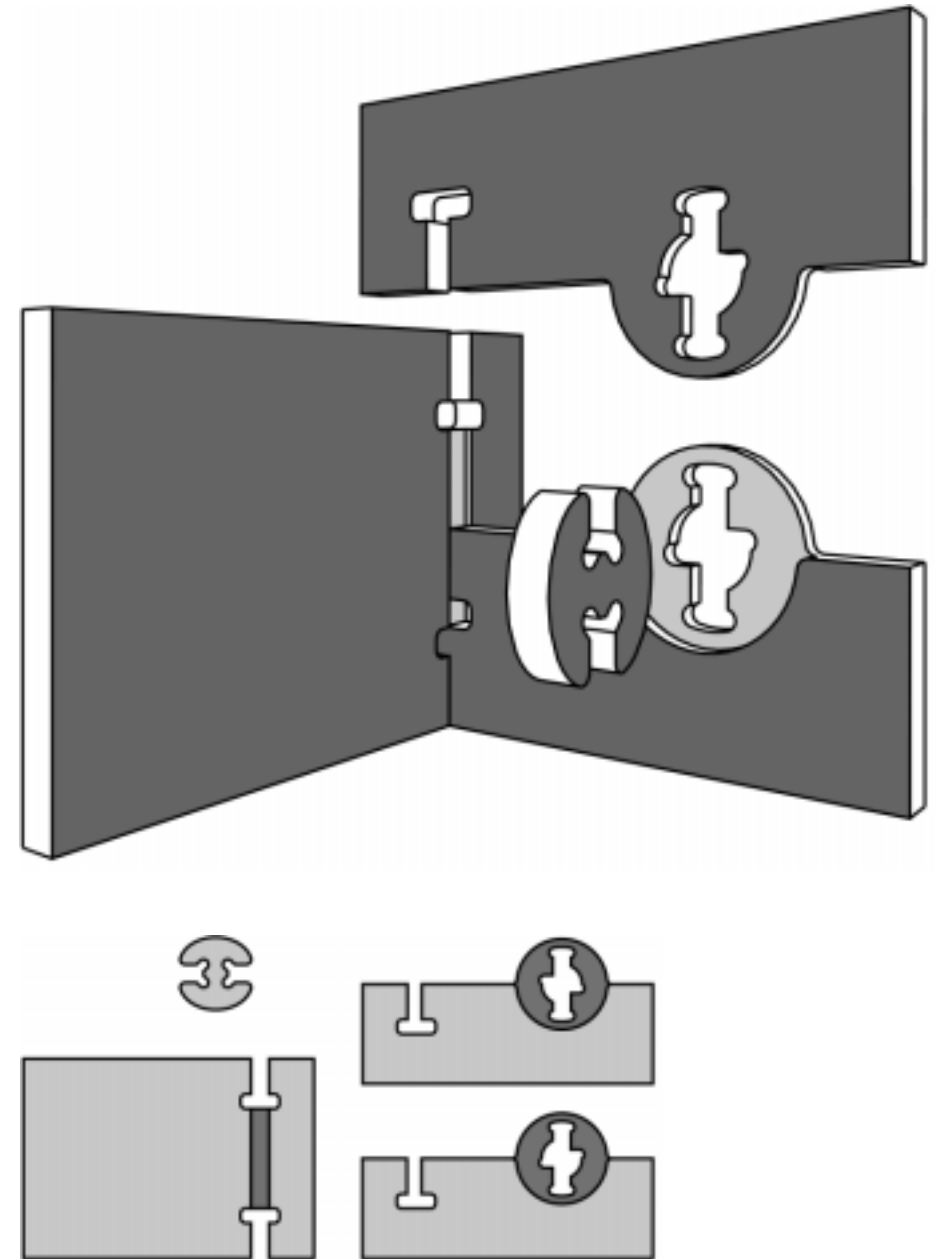
→ to the data files





Double Lapped Slotting Joint with Key

The Double Lapped Slotting Joint with Key is useful wherever the joint needs to be secured against unintentional loosening. The two lapped construction elements are locked with a turnable key and the enclosed part is thus fixed. Around the key, the construction elements that are to be secured are flattened in a circular area and a slot is cut in it. The key, that should be made of multiplex plywood as it has to withstand great strain, is inserted in the slot created when assembling both parts and then turned. The geometry of the slot is such that the key stops after a quarter of a turn.



→ to the data files

